

COMPLETE INSTALLATION INSTRUCTIONS

Installation Method: 5G Locking

Please read complete instructions before commencing installation

Cyrus floors is designed for easy, snap-together installation. Cyrus floors can be installed:

- in rooms on, above or below ground level
- over plywood, OSB or concrete subfloors
- directly over most existing hard surface flooring
- over radiant heating systems

Note: all installations of Cyrus flooring over radiant heat systems must follow the special instructions for installation over radiant heat, available from your Cyrus dealer.

INSTALLER'S / OWNER'S RESPONSIBILITY

Cyrus floors is manufactured to highest standards of product quality, but occasional manufacturing defects may occur in the product. It is the sole and joint responsibility of the installer and owner to conduct a quality inspection of all pieces Cyrus floors before installation. Any pieces of flooring that appear to contain a manufacturing defect should not be installed. Flooring that has been installed will be deemed to have been inspected and accepted by the installer and owner, even if the owner is not present at the time of installation. If defects are found, please contact your dealer. It is the sole responsibility of the flooring installer to ensure that the job site, subfloor and installation and materials meet or exceed all applicable industry standards. Cyrus floors accepts no responsibility for problems arising from incorrect or improper site preparation or installation procedures.

Important: SPC is a waterproof product, but it is not a vapor barrier. Crawl spaces still need adequate ventilation and exposed earth must be covered by 6mil poly vapor barrier (min. 12" overlapped joints). Concrete slabs must cured and dry (min. 60 days old) with no evidence of moisture.

SITE PREPARATION:

INSTALLATION IN NEWLY-CONSTRUCTED HOME

Installation of flooring is one of the last jobs of a new home construction. Prior to installing a VCC floor, ensure that:

- the building is completely enclosed with all outside doors and windows in place and securable, including a door from an attached garage to house interior
- all concrete, masonry, plastering, drywall, texturing, painting and other wet work is complete and thoroughly cured and dry
- all floor mounted cabinetry (including kitchen islands, bathroom vanities, etc) is installed and secured
- basements and crawlspaces are dry. Crawlspaces must have no standing water; crawlspaces must also have a vapor barrier and adequate ventilation in accordance with local building codes.
- gutters and downspouts are in place, directing water away from the building
- HVAC systems are fully operational, enabling heat and humidity levels to be controlled and maintained throughout the home. A temperature range of 60-80°F (15-26°C) should be maintained before, during and after installation subfloor is properly prepared for installation
- if installing over radiant heat, ensure that the system is in full working order and has been fully tested and running for a minimum of two weeks prior to installation. The system should be turned off for 24 hours prior to installation in the install zone.

INSTALLATION IN EXISTING HOME (RENOVATION)

Installation in an existing home must meet the same conditions as a new home. If part of a larger remodeling project, ensure that all wet work (painting, wallpapering, texturing, etc) is completed and thoroughly dry before commencing flooring installation. In addition:

- remove all furniture, artwork and other valuables from installation area
- remove baseboards and moldings
- undercut door casings (use a piece of the flooring as a depth gauge)
- remove existing flooring, if necessary
- if installing over radiant heat, it is strongly recommended that a radiant heat technician be consulted prior to installation to ensure that the heating system can be operated effectively at temperatures acceptable to the wood flooring. The system should be turned off for 24 hours prior to installation in the install zone.
- all floor mounted cabinetry (including kitchen islands, bathroom vanities, etc) is installed and secured

SUBFLOOR PREPARATION

Cyrus Vinyl Composite Core flooring is waterproof but to ensure the health and safety of your home, it is strongly recommended to eliminate all sources of moisture before commencing installation.

The installer and customer are jointly and solely responsible for ensuring that the subfloor is suitable for the flooring application and properly prepared for installation.

All Subfloors must be clean, dry, structurally sound, and flat to within 3/16" in 10'.

Wood/Plywood Subfloors must be tested for moisture content according to NWFA guidelines, the subfloor moisture content should not exceed 12%. Subfloors must meet local building code requirements (US: minimum 3/4" T&G plywood or 23/32" T&G OSB. Canada: minimum 5/8" T&G plywood or 3/4" T&G OSB). They must be secure to the joists, free of squeaks, bounce between floor joists and protruding fasteners.

Concrete Subfloors must be fully cured and dry (60 days) prior to installation.

For **commercial installations**, slab must be tested for relative humidity using approved testing method (ASTM F2170-11 or equivalent) and must return a reading of 85% RH or less.

For **residential installations**, slab may be tested for relative humidity using approved testing method (ASTM F2170-11 or equivalent) and must return a reading of 85% RH or less or moisture content may be measured using a Tramex Moisture Meter.

Gypsum Subfloors must be fully cured (30 days) prior to installation. Moisture content should be measured using a Tramex Moisture Meter or equivalent and return an emission rate of 5 lb / 1000 sq/ft / 24 hours or less.

When in situ **Relative Humidity** testing is not possible, moisture content must be assessed using a Tramex Moisture Meter or equivalent device. If the slab is true concrete, the emission rate must be 3 lb / 1000 sq/ft / 24 hours or less. If the slab is lighter weight gypsum concrete (eg Gypcrete), the emission rate must be 5 lb / 1000 sq/ft / 24 hours or less.

Note: Prior to flooring installation, ensure that the radiant heat system is in full working order and has been fully tested and running for a minimum of two weeks prior to installation. The system should be turned off for 24 hours prior to installation in the install zone.

ACCLIMATION

Before installation, make sure that the flooring is at the same temperature as the install site; depending on the time of year this may take 24-48 hours for the flooring to become balanced to the install sites interior temperature.

UNDERLAY

When installing these products, a separate underlay is not required.

Where additional height is required to match an existing floor, a rigid underlayment (4mm or 6mm cork) or other rigid materials (plywood, OSB etc.) may be used under Cyrus floors without affecting the performance or warranty of the Cyrus SPC flooring. All pre-installation preparations such as floor flatness, dryness etc. must be completed prior to installation.

STARTING WALL

Orient the installation so the boards are parallel to incoming sunlight and select your starting wall. Check it for straightness. If it is not straight, you may need to trim the edge of the first row of floorboards to match the shape of the wall. Calculate how many rows of flooring will be required for the job. You will probably have to rip down (cut lengthwise) the final row of boards to fit. The final row must be at least half a board width wide to ensure the integrity of the joint. If it will not be half a board width, then rip down your starting row enough to make up the difference.

EXPANSION SPACE

To allow for this, leave a 3/8" (8mm) expansion space around the entire perimeter of the floor between the flooring and the walls. Also leave expansion space where the flooring will meet any vertical obstacle, such as stairs, pipes, door sills, tiles, cabinets etc. Have a supply of 3/8" (8mm) spacers on hand during installation.

Areas in excess of over 40' in any direction, will require a T-mold transition strip.

Flooring Made Easier

Important information

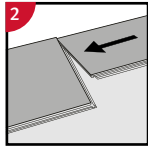
- The flooring must be acclimated a minimum of 24 to 48 hours prior to installation in the room where the installation will take place
- In rooms larger than 20 x 20 m (400 m²), the flooring must be installed in smaller sections with expansion joints
- The distance to walls and other permanent pieces of construction elements (such as pillars and kitchen islands) should be approximately 5 mm
- Never install very heavy pieces of furniture such as kitchen islands/cabinets on top of the flooring
- The indoor climate should have a temperature between 15-23 °C and relative air humidity between 30-60% (according to Swedish Standards Institute).
- Always follow the floor manufacturers requirements and specifications regarding subfloor preparation.

General installation instructions



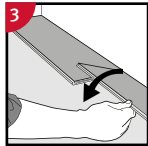
1 First plank, first row

Place a spacer with predicted thickness to the left and position the panel against the wall.
Later, after 3 rows, you can easily position the flooring against the front wall with predicted spacers.



2 Second plank, first row

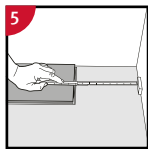
Place this panel gently close to the short end of the first one.



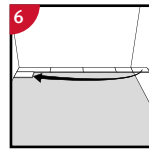
When folding down it is important to start from the corner closest to the previous row, folding down towards the center, and continue towards the opposite long side. During the fold down, make sure the panels are close to each other.



Afterwards press slightly along the short end just installed.

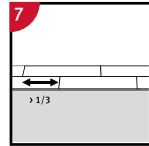


At the end of the first row, put a spacer to the wall and measure the length of the last plank to fit.

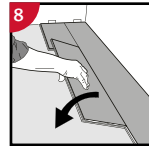


6 Second row

First plank min length 400 mm. Put a spacer against the left wall.

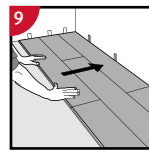


Staggered joint distance i.e. minimum distance between short ends of panels in parallel rows shall not be less than the given length.



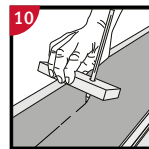
8 Second plank second row

Place the panel gently and close to the short end of the previous panel and fold it down in a single action movement.



9 After 2-3 rows

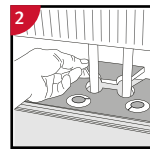
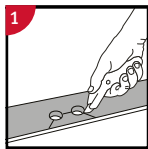
Adjust the distance to the front wall by placing spacers.



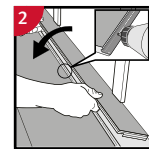
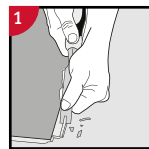
10 Last row (and perhaps also first row).

Minimum width 50 mm. Place a spacer to the wall before measuring. Make a simple drawing tool (piece of wood with a hole) and mark the panel along the wall. Cut the panels lengthwise including the flexible tongues.

Installation around radiator/heating pipes

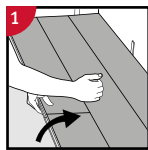


Drill holes two times larger than the diameter of the pipes. Remove a piece of the panel with a utility knife. Put the panel on one side of the pipes and the removed piece on the other side.



Remove the vertical locking part of the strip with a chisel, put applicable glue on the strip and push the planks horizontally together. Place some spacers between last board and the wall.

Dismantling panels



1 Separate the whole row by carefully lifting up and release the whole row.

2 Fold up the row and release the whole long side.



2 Disassemble the panels by sliding the short ends horizontally.

Never fold up a panel, as this damage the profile.

PRODUCT CARE & WARRANTY

CARE & MAINTENANCE

Cyrus floors have a durable finish that is designed to provide years of protection and easy care. Some simple care and maintenance procedures will help to keep your Cyrus floor looking its best and help to protect it from unnecessary wear and damage.

- Sweep or vacuum the floor regularly to keep it clean and free of dust, sand and other abrasive materials.
- Place area rugs or doormats at entryways to help prevent sand, grit, oils, dirt and other abrasive materials from being tracked onto the floor surface from outdoors.
- Place protective mats at high-use work areas such as sinks, ranges, service counters and workstations.
- Your new VCC flooring is not affected by water but it is always a good idea to wipe up any moisture on the floor quickly so that it does not work its way into any other areas where it may cause damage or cause a slipping hazard.
- Ensure that environmental conditions are always maintained with a temperature range of 60-80°F (15-26°C) and humidity at 30-50%. Problems resulting from exposure to improper environmental conditions are not covered by the product warranty.
- If the floor is installed over a radiant heating system, never allow the surface temperature of the floor to exceed 82°F (28°C). Avoid dramatic temperature changes; always adjust the system gradually in 5° increments. It is recommended that a dedicated quick recovery thermostat be installed to allow the temperature of the radiant heating system to be accurately controlled.
- Put felt protector pads on the feet of all furniture, display stands, file cabinets and other accessories that will be placed directly onto the floor surface. Inspect regularly for wear and replace as necessary.
- Avoid letting sharp or pointed objects come into contact with the floor surface.
- In areas where direct or extreme sunlight occurs use window coverings or drapes to avoid overheating the flooring and prevent fading.

CLEANING

- Sweep or vacuum the floor regularly to keep it free of dust, grit and other abrasive materials.
- Blot up any food, drink, or liquid spills immediately.
- For more thorough cleaning, use Therapy by Kentwood Spray Cleanser (available at your Cyrus dealer or online at Cyrusfloors.com).
- Do not use any household cleaners, oils, soaps, waxes or any abrasive materials or scouring agents on the floor.
- Do not use steam cleaners and/or other products that will over-wet or flood the floor.

Failure to follow these instructions may void the product warranty.

Questions? Visit cyrusfloors.com or email info@htbcflooring.com

Flooring Made Easier

UV COATING

Cyrus SPC comes with a UV coating to reduce the effects of the sun however in areas where prolonged or extreme sunlight occurs use window shades or drapes to reduce exposure. It will not only help prevent the environment and floor from overheating, it will also help to prevent fading or discoloration to the surrounding furnishings, artwork and flooring.

PRODUCT WARRANTY

This warranty applies to the original purchaser and the original site of installation only. The conditions and terms of this warranty are as stated herein and may not be altered by any dealer, installer, agent, or distributor of Cyrus flooring.

MANUFACTURING WARRANTY

Cyrus flooring warrants that Cyrus floors shall not contain manufacturing defects in excess of industry standards (5 %of total flooring quantity). If manufacturing defects are present in excess of industry standards, the defective pieces should be returned to the original place of purchase PRIOR TO INSTALLATION. If Cyrus deems the flooring to be defective, Cyrus will replace it with an equivalent quantity of the same or similar product at no charge to the customer. If Cyrus is unable to furnish an equivalent replacement product, Cyrus may, at its sole discretion, elect to refund to the customer a portion of the original purchase price equivalent to the value of the defective portion of the floor. Under no circumstances will the value of a warranty claim exceed the original purchase price of the product.

It is the responsibility of the customer to inspect all pieces of flooring for defects prior to installation. Flooring that has been installed will be deemed to have been accepted by the customer and will not be eligible for replacement. Cyrus accepts no responsibility for labor costs incurred to remove or install products.

FINISH WARRANTY

Limited Lifetime Residential Warranty

When installed in a residential application, Cyrus warrants that the decorative surface on Cyrus SPC floors will not stain or wear through under normal residential traffic conditions and use.

Light Commercial Warranty - Atlantis Collection When installed in a light commercial application, Cyrus warrants that the decorative surface on Cyrus SPC floors will not stain or wear through for a period of 5 years from the date of purchase under light commercial conditions and use. Light commercial applications include salons, professional business offices and reception areas, multi-family buildings such as condos/apartments, light retail or specialty stores and boutiques. Cyrus SPC floors are not recommended for food and beverage service operations, or heavy-duty retail stores (e.g.: food, drug and hardware stores); use in such applications will not be covered by this warranty.

Light Commercial Warranty- Eldoris & Durax Collection

When installed in a light commercial application, Cyrus warrants that the decorative surface on Cyrus SPC floors will not stain or wear through for a period of 10 years from the date of purchase under light commercial conditions and use. Light commercial applications include salons, professional business offices and reception areas, multi-family buildings such as condos/apartments, light retail or specialty stores and boutiques. Cyrus SPC floors are not recommended for food and beverage service operations, or heavy-duty retail stores (e.g.: food, drug and hardware stores); use in such applications will not be covered by this warranty.

If wear-through does occur within the warranty period, Cyrus will, at its sole discretion, either repair the affected portion of the floor or replace it with an equivalent quantity of the same or similar product at no charge to the customer. If Cyrus is unable to repair the product or is unable to furnish an equivalent replacement product, Cyrus may, at its sole discretion, elect to refund to the customer a portion of the original purchase price equivalent to the value of the affected portion of the floor. This is the sole remedy provided by this warranty. Any other incidental or consequential damages or costs incurred by the customer because of the imperfect piece of flooring, including any labor costs incurred to remove and re-install affected portions of flooring, will not be covered by this warranty. Isolated areas of surface wear in high traffic areas (doorways, hallways, service counters, workstations, etc) are not considered normal wear through and are not covered by this warranty. Surface wear on moldings and accessory pieces (transitions, stair noses, etc) is not covered by this warranty.

Changes in gloss levels are not considered surface wear-through, nor is it considered surface wear. Excessive wear along the edges and bevels of individual boards (within 1/8" / 3mm of the edge of the panel) is not covered by this warranty. Scratches, indentations, marks, stains, or other damage caused by negligent or accidental exposure to pebbles, grit, sand or other abrasives, pets, insects, high heeled or cleated shoes, fire, product spills, excessive moisture, heat or dryness are not considered normal wear and are not covered by this warranty.

There are no other express or limited warranties except as set forth above.

WARRANTY EXCLUSIONS AND CONDITIONS

Installation must be performed in accordance with the installation instructions included with the product and in accordance with local building codes. Cyrus floors are for indoor residential or light commercial use only.

Environmental conditions must be maintained as specified, with a temperature of 60-80°F (15-26°C) and humidity at 30-50% at all times. Problems resulting from exposure to levels of heat and/or humidity other than those specified herein are not covered by this warranty.

Where the flooring is installed over a radiant heating system, the installation must conform to the manufacturer's Special Instructions for Installations Over Radiant Heat, including the placement of approved underfloor heat sensors. After installation, the system must be controlled so that the surface temperature of the floor does not exceed 82°F (28°C) and any changes in temperature are applied gradually to avoid shocking the floor.

Care and maintenance must be carried out in accordance with manufacturer's instructions. These warranties are not transferable. No installer, retailer, distributor, or agent of Cyrus flooring has the authority to alter the terms or conditions of these warranties.

These warranties provide no express or implied coverage against:

- Scratches, indentations, marks, stains or other damage caused by negligent or accidental exposure to pebbles, grit, sand or other abrasives, pets, insects, high heeled or cleated shoes, fire, product spills, excessive moisture, heat or dryness
- Problems arising from failure to follow manufacturer's written installation, care and maintenance instructions
- Excessive wear along the edges and bevels of individual boards (within 1/8" / 3mm of the edge of the panel)
- Expansion and contraction between boards or any other problems arising from prolonged exposure to excessive heat and humidity levels
- Fading and discoloration caused by exposure to extreme direct sunlight

The foregoing is the complete and exclusive statement of the express warranties provided herein and is in lieu of all the other express and / or statutory warranties by the manufacturer, to the extent provided by law. Cyrus floors assumes no liability for incidental or consequential damages arising from the use or non-use of the product. However, some states and provinces do not allow the exclusion or limitation of incidental or consequential damages, so this exclusion may not apply to you. This warranty gives you specific legal rights and you may also have other rights that vary from state to state or province to province. The sole remedy provided by this warranty is the repair of imperfect products or replacement of imperfect products with an equivalent quantity of the same or similar product. If Cyrus is unable to repair the product or is unable to furnish an equivalent replacement product, Cyrus may, at its sole discretion, elect to refund to the customer a portion of the original purchase price equivalent to the value of the affected portion of the floor. This warranty does not cover any labor costs incurred to remove or re-install products. Under no circumstances will the value of a warranty claim exceed the original purchase price of the product.

CLAIM PROCEDURE

Claims must be submitted in writing to the Cyrus floors dealer where the product was purchased. Please include a copy of the original sales receipt and a photograph showing the cause of claim. In the event of a claim for an installation over radiant heat, please consult the manufacturer's Special Instructions for Installations Over Radiant Heat.